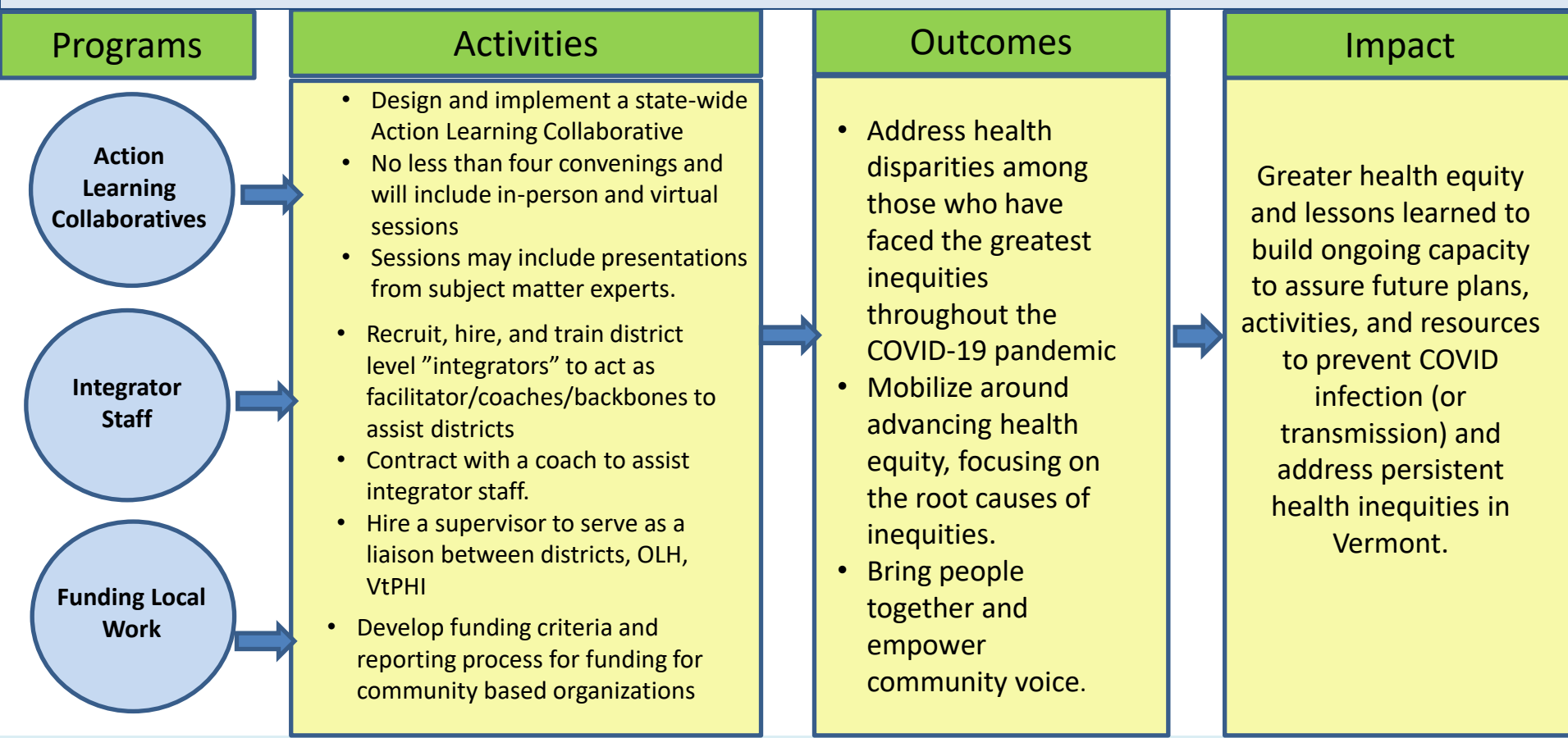


# Vt PHI will collaborate with the Office of Local Health to assist health equity capacity building in Vermont Department of Health Districts

**Create** opportunities for a diverse range of community members and partners to collaborate to build healthier, more resilient communities. **Provide** opportunities for training and technical assistance to collaboratives by convening regular Learning Community sessions. **Support** innovative, community-led approaches to improve community resilience. **Support** strategies to promote healthy communities and eliminate health disparities. **Engage** with the Office of Local Health and the community to reach the identified grant goals.



**Health Equity exists when all people have a fair and just opportunity to be healthy – especially those who have experienced socioeconomic disadvantage, historical injustice, and other avoidable systemic inequalities that are often associated with social categories of race, gender, ethnicity, social position, sexual orientation and disability.”**